

# (1) EU-Type Examination Certificate

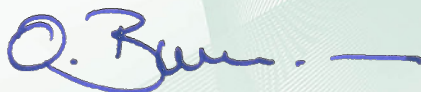
## according to Module B Paragraph 6.1 of PPE Regulation (EU) 2016/425

- (2) Regulation of the European Parliament and of the Council of 9 March 2016 relating to personal protective equipment (PPE) - Regulation (EU) 2016/425
- (3) No. of EU-Type Examination Certificate: **ZP/B002/25** replaces ZP/B004/20
- (4) Product: **Anchor device type B**  
Type: **ABS-Lock® I and II**
- (5) Manufacturer: **ABS Safety GmbH**
- (6) Address: **Gewerbering 3, 47623 Kevelaer, GERMANY**
- (7) Risk category: **III**
- (8) The design and construction of this personal protective equipment and any acceptable variation thereto are specified in the appendix to this EU type-examination certificate.
- (9) The certification body of DEKRA Testing and Certification GmbH, Notified Body No. 0158 according to Chapter V of Regulation (EU) 2016/425 of 9 March 2016, certifies that this personal protective equipment has been found to comply with the essential Health and Safety Requirements given in Annex II to the Regulation. The evaluation results are recorded in report PB 25-001. Other possibly applicable Union legislations applicable to the specified personal protective equipment have not been taken into account in this EU-type examination certificate.
- (10) The essential Health and Safety Requirements are assured in consideration of  
**DIN EN 795:2012**                      **DIN CEN/TS 16415:2017**
- (11) This EU type-examination certificate relates only to the design, examination and tests of the specified personal protective equipment in accordance to Regulation (EU) 2016/425. For category III personal protective equipment, this EU type-examination certificate may only be used in conjunction with one of the conformity assessment procedures referred to Article 19 (c).
- (12) When applying the CE Marking according to Article 16 and 17 of Regulation (EU) 2016/425 to the products that conform to the types examined, the client is obliged to add, in accordance with the attached pattern, the identification number of the Notified Body engaged in the conformity assessment according to Module C2 or D. Furthermore, the manufacturer is obliged to issue an EU declaration of conformity in accordance with Article 15 of Regulation (EU) 2016/425 and to enclose it with the personal protective equipment, or to indicate the Internet address in the manual and in the instructions in Annex II, point 1.4., at which the EU declaration of conformity can be accessed.
- (13) This EU-Type Examination Certificate is valid until 2023-01-12.

DEKRA Testing and Certification GmbH  
Bochum, 2025-01-13

Signed: Brumm  
Managing director

We confirm the correctness of the translation from the German original. In the case of arbitration only the German wording shall be valid and binding.



Managing director

## TRANSLATION

- (14) Appendix to
- (15) **EU-Type Examination Certificate**  
**ZP/B002/25**
- (16) 16.1 Subject and type  
Anchor device type B  
Type: ABS Lock® I and II

### 16.2 Description

The anchor device of type ABS Lock® I is a removable single anchor point that, in conjunction with the threaded sleeve of type ABS Lock® II, is used to protect a maximum number of two people against falls from a height (Fig. 1). The device is to be mounted inside the threaded sleeve onto surfaces of sufficient strength.

The anchor device consists of an offset bolt ( $\varnothing$  12 mm and  $\varnothing$  21.5 mm) made of corrosion-resistant steel which is fitted with balls at its bottom end. At its top end, an eyelet with a joint is fastened to which the user can connect his personal protective equipment to protect himself against falls from a height. Fig. 2 shows an available variant of the threaded sleeve which can be used if the device is mounted in steel.

The bolt can be locked and unlocked by means of the balls and a respective mechanism which is actuated by pushing a spring-loaded bolt located on the inside. The device is mounted to the structure by means of a threaded sleeve of type ABS Lock® II with an outside M22 thread made of corrosion-resistant steel which has been mounted to the structure in advance (Fig. 2).

The sleeve shall only be mounted with a projection of 30 mm measured from the top edge of the sleeve to the structure surface. The minimum screw depth of the sleeve is 70 mm. The sleeve length can be between 100 mm and 1000 mm.

The anchor device is intended for bearing loads being exerted from all directions.

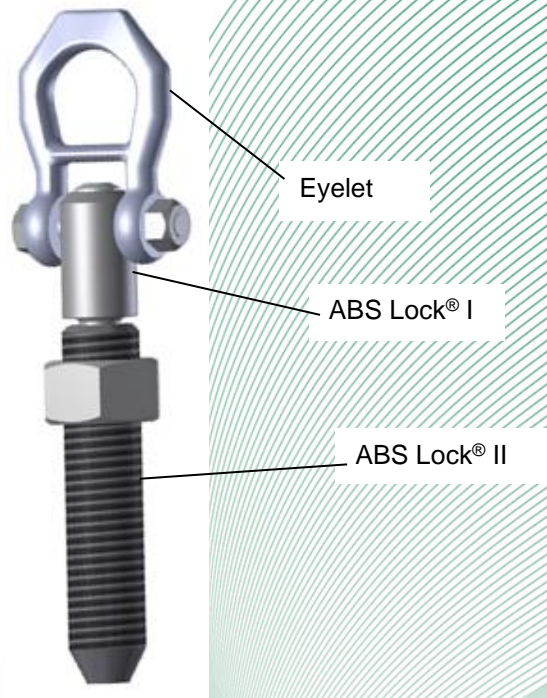


Fig. 1: Anchor device with threaded sleeve

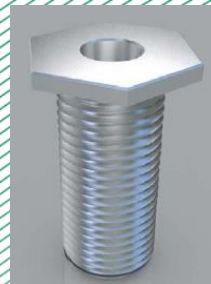


Fig. 2: Variant of threaded sleeve



Fig. 3: Assembly example of anchor device, type ABS Lock® I

- (17) Report

PB 25-001, 2025-01-13