

# (1) CERTIFICATE

- (2) No. of the Certificate: **ZP/B071/25-PZ** replaces ZP/B004/23-PZ
- (3) Product: **Anchor device type D**  
**Type: ABS AluTrax**
- (4) Manufacturer: **ABS Safety GmbH**
- (5) Address: **Gewerbering 3, 47623 Kevelaer, Germany**
- (6) The design of this product and any acceptable variation thereto are specified in the appendix to this certificate.
- (7) The Certification Body of DEKRA Testing and Certification GmbH certifies that this product complies with the requirements of the test regulations listed under item 8 below. The test results are recorded in report PB 25-086.
- (8) The requirements are assured by compliance with  
**DIN EN 795:2012** **DIN CEN/TS 16415:2017**
- (9) This certificate relates only to the design and tests of the specified product in accordance to the contemplated requirements. Further requirements applied to the manufacturing process and supply of this product, are not covered by this certificate.
- (10) The manufacturer is authorised to apply the mark of conformity to the products that conform to the types examined.
- (11) This certificate is valid until 2030-10-28.



DEKRA Testing and Certification GmbH  
Bochum, 2025-10-29

Signed: Brumm  
Managing director

We confirm the correctness of the translation from the German original.  
In the case of arbitration only the German wording shall be valid and binding.

A handwritten signature in blue ink, appearing to read 'Q. Brumm', written over a horizontal line.

Managing director

## TRANSLATION

- (12) Appendix to
- (13) **Certificate**  
**ZP/B071/25-PZ**
- (14) 14.1 Subject and type  
Anchor device type D  
Type: ABS AluTrax

### 14.2 Description

The anchor device of type ABS AluTrax (Fig. 1 - 7) is used for the protection of three people against falls from a height. An aluminium profile (30 mm wide) is used as the rigid anchor line and the mobile anchor point of type ABS AluTrax Roll is running on that anchor line. The user protects himself against falls from a height by connecting his personal protective equipment to the anchor point.

The system is assembled horizontally by means of the angles, intermediate brackets and butt connectors provided. The maximum field length, i.e., the distance between two brackets, is 2.4 m. The ends of the rigid anchor line are secured against accidental overriding by an end stop (Fig. 7).

The use of the anchor device with the holder for steep roofs (Fig. 6), is intended for securing 2 persons against falls from a height.

The anchor device is made of corrosion-resistant material.



Fig. 1: Anchor device, type ABS AluTrax (assembly examples)



Fig. 2: Anchor line



Fig. 3: Mobile anchor point, type ABS AluTrax Roll



Fig. 4: Bracket



Fig. 5: Angle

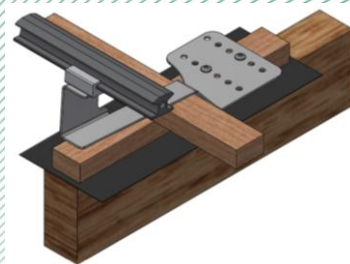


Fig. 6: Rail with bracket for steep roofs

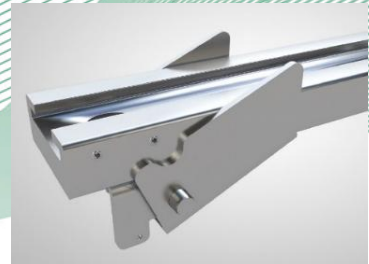


Fig. 7: End lock

- (15) Report

PB 25-086 dd. 2025-10-29